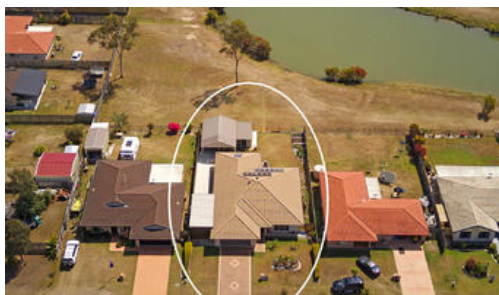


SOLD



8 Bronton Way, Point Vernon



WATER VIEWS, 2.58 M HIGH, 7.5 X 3.5 M CARAVAN PORT, 6 X 6 DOUBLE SHED, 4.5 X 2.9 WORKSHOP, 6 X 2 SHED CANOPY, LARGE ALFRESCO, 223 SQM OF LUXURY LIVING

* UNDER CONTRACT IN 134 DAYS *

7.5 x 3.5 CARAVAN PORT, 6 X 6 DOUBLE SHED, 4.5 x 2.9 WORKSHOP, 12 SOLAR PANELS & HOT WATER.

MASTER BEDROOM, WATER VIEWS, WALK IN ROBE, SEPARATE LIVING ROOM AND A LARGE FAMILY AREA.

This Immaculate 223 Sqm Hotondo Home Was Constructed in November, 2006 on 750 Sqm.

The Current Sellers Have Impeccably Maintained and Improved Their Home to a Very High Standard.

Benefits:

- * 7.5 x 3.5 Caravan Port (Internal 2.58 H, 2.98 W, 7.5 L)
- * Internal Front Post Width 3 Metres
- * 3.2 M Gates, Side Access to the Rear
- * 6 x 6 Double Shed, Light and Power
- * 6 x 2 Shed Canopy

The above information provided has been furnished to us by the vendor/s. We have not verified whether or not that information is accurate and do not have any belief in one way or the other in its accuracy. We do not accept any responsibility to any person for its accuracy and do no more than pass it on. All interested parties should make and

🛏 4 🏠 2 🚗 5

Price SOLD for \$445,000

Property Type residential

Property ID 716

Land Area 750 m²

Floor Area 223 m²

AGENT DETAILS

Tony Stephens - 041 66 99 000

OFFICE DETAILS

Real Blue Real Estate

041 66 99 000

